



Bridging Organizations and marginalized communities for Local Sustainability Transitions in EuRope

6th BOLSTER regional policy dialogue

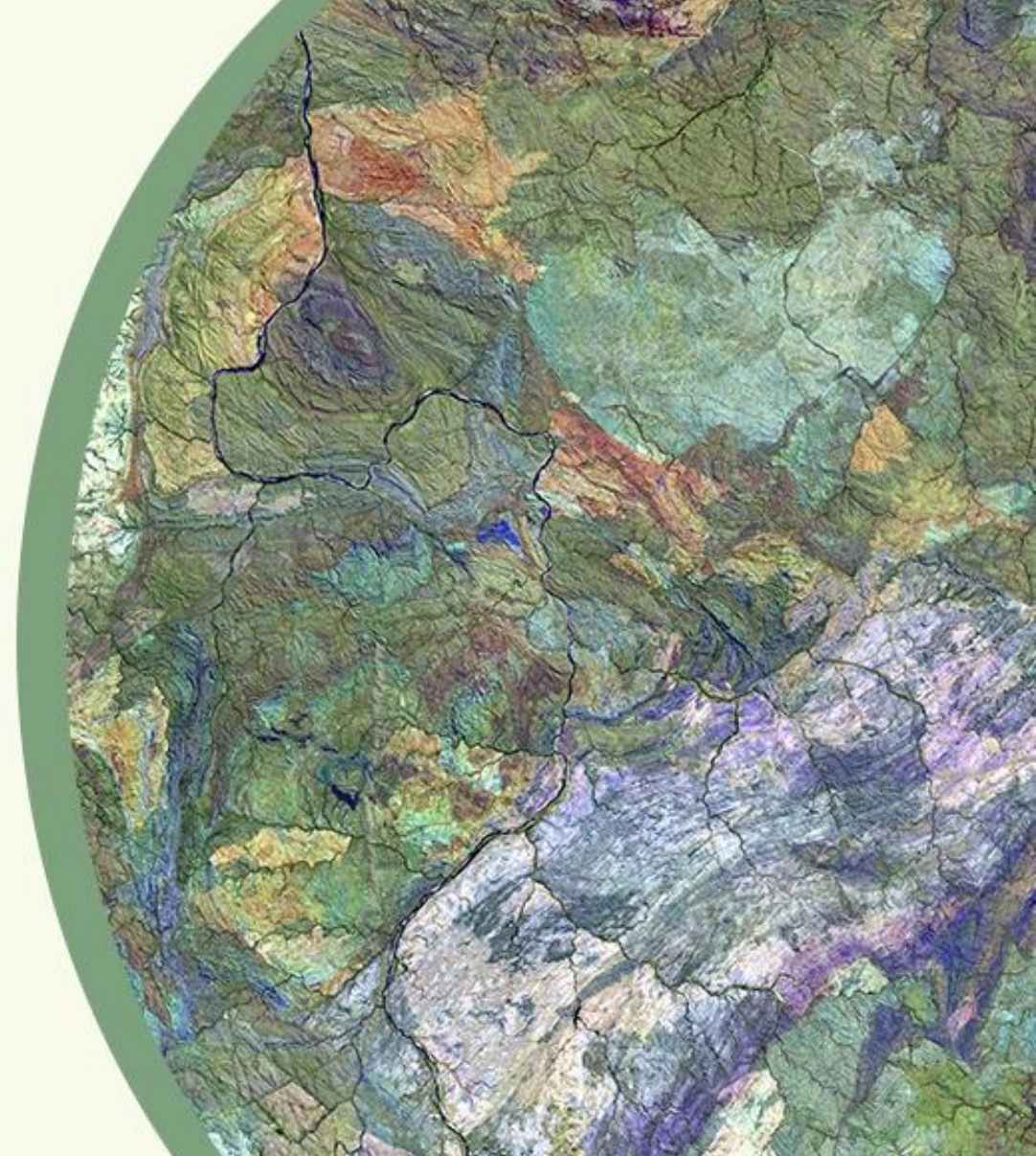
The Just Transition Mechanism as a way to tackle energy poverty: Perspectives from Romania and beyond



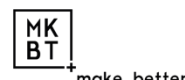
23rd September 2024 - 09:30 - 12:00 CEST



Online



This project is funded by the European Union under the Grant Agreement n.º 101069586. Views and opinions expressed are however those of the author(s) only and do not necessarily reflect those of the European Union or CINEA. Neither the European Union nor the granting authority can be held responsible for them.



SLIDO QUESTIONNAIRE



www.slido.com

LOGIN: #BOLSTER-6

Password: bolster230924

slido

Please download and install the
Slido app on all computers you use



**Where are you joining us from
(city/region)?**

① Start presenting to display the poll results on this slide.

slido

Please download and install the
Slido app on all computers you use



**How familiar are you with the
topic of Just Transition in the
EU?**

① Start presenting to display the poll results on this slide.

Presentations: Regional Perspectives on Energy Poverty in Romania

- ❖ **Alexandra Lulache**, Housing Coordinator, MKBT (Romania)
- ❖ **Dr. Andreea Vornicu**, Researcher, Centre for the Study of Democracy, Babeş-Bolyai University, Cluj-Napoca; Romanian Energy Poverty Observatory (Romania)
- ❖ **Alexandru Kelemen**, Executive Director, Association for Integrated Territorial Development of the Jiului Valley (Romania)

BOLSTER

investigates...

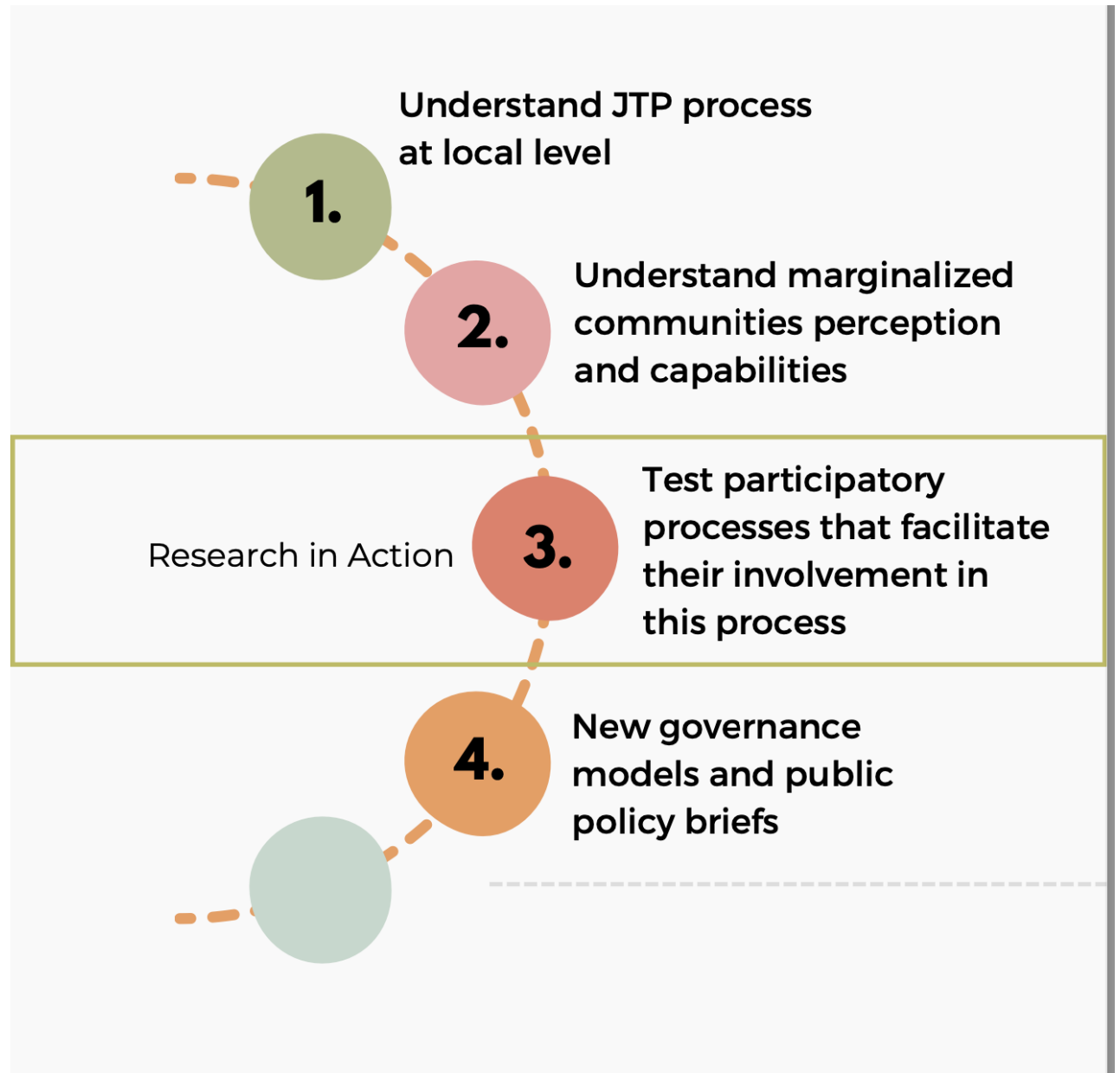
how to operationalize the
'leaving no one behind'
principle in the just transition
process in Europe

Aims to...

1) understand how marginalized communities understand and are affected by EGD-related policies and
2) Test, through research and action, how this process can be made more inclusive and just.



THE PROCESS



SETTING

Prahova region, Romania

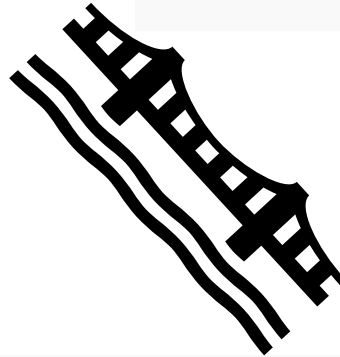
- The hotspot of Romanian oil and gas industry: identity, heritage, well-paid jobs;
- Demographic decline greater than the national average, and significant among the working-age population;
- Low trust in the local public authority;
- Weak and underdeveloped civic sector;
- JTP elaboration – “closed door process”.



THE FRACTURE

JUST TRANSITION OBJECTIVES

To enable regions and citizens to face the **social**, **employment**, economic and **environmental** effects of the transition to meet climate & energy targets.



Just
Transition
Fund

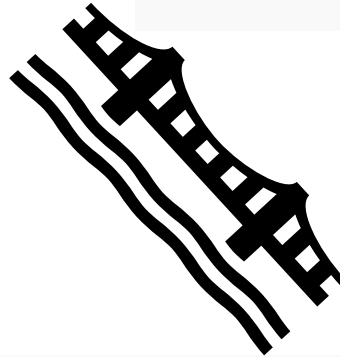
Informal settlement – informal/reduced access to basic utilities
Very high energy poverty
Poorly insulated houses
Heating with woods stoves - polluting, hazardous, expensive
Contaminated lands
Higher care burden on women
Informal & precarious employment
Zones of exclusion common to postindustrial urban areas

EXPERIENCES
ON THE
GROUND
MIMIU

THE FRACTURE

JUST TRANSITION OBJECTIVES

To enable regions and citizens to face the **social**, **employment**, economic and **environmental** effects of the transition to meet climate & energy targets.



Just
Transition
Fund

Dentistry equipment
Tourism villas
Hotel expansion
Building new industrial warehouses
Investments in food industry packaging

WHAT WAS THE MONEY SPENT ON

THE FRACTURE

Direct experience, no discourse

Not represented in processes of change (decision makers, NGOs)

If left unaddressed, can deepen existing inequalities

Investments would have a direct impact

The issues they experience not seen as core to the JT process

All-round ineligible – poverty, informality, no form of collective organization

Good discourse, instrumentalizes sustainability jargon

Project title: Productive investments in RAMARA SRL
The general objective of the project is to develop the competitiveness of RAMARA SMART TEAM SRL and to gain the capacity to create sustainable jobs, particularly for the people affected by the just transition, and to participate in the process of protecting cultural heritage.

Invited to the discussion table

Caters to established economic actors

Impact of investments based on a trickle-down logic

Employment seen as core of local JT narratives

SMEs only eligible entity in open calls

OPEN QUESTIONS

- Why are funds dedicated to preventing marginalization, inaccessible to marginalized groups?
- Why is energy poverty not part of the narrative of the JT? Why is structural poverty/exclusion ignored?
- How do we create a common vision, with stakeholders, so they don't look away and recognize these forms of multi-dimensional deprivation as a legitimate issue of environmental justice?
- How do we create a bridge between EU funding and grassroots needs without having the process coopted by power?



CENTRUL
PENTRU
STUDIUL
DEMOCRAȚIEI

Measuring and addressing EP

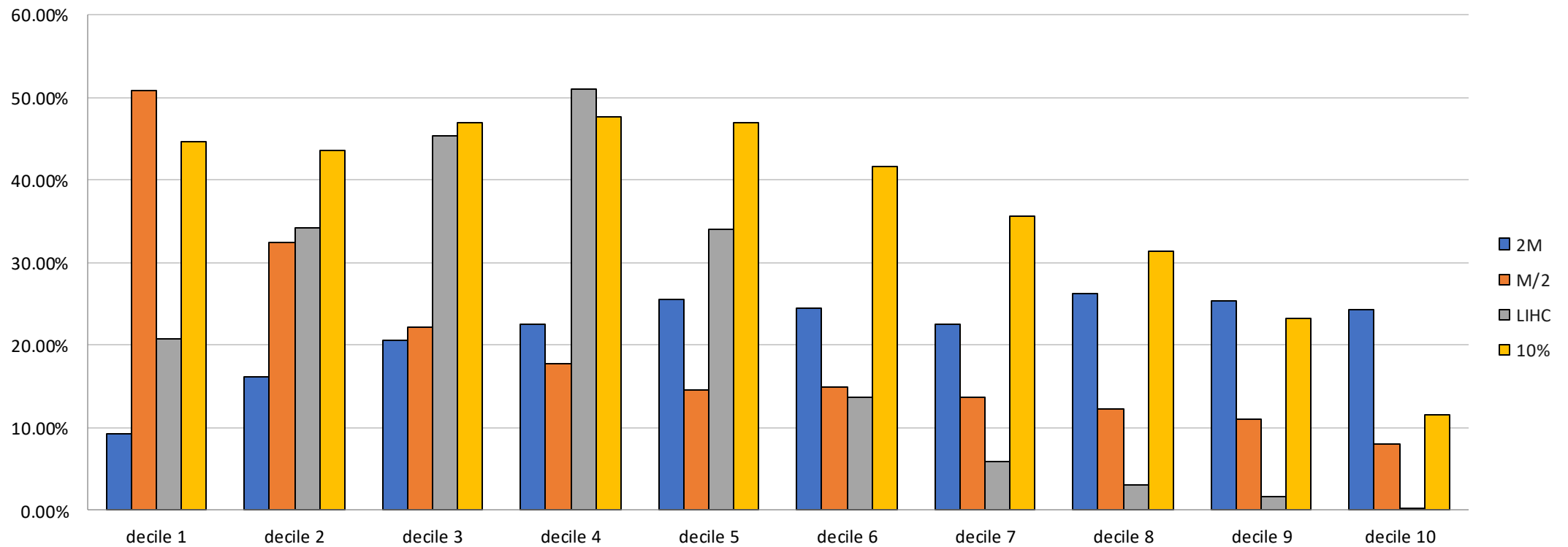
Most used indicators for EP, data source and years

Indicator	Value (source, year)	What do they say?
2M	21.7% (HBS, 2022)	The household spends more than the double of the national median on energy bills.
M/2	19.8% (HBS, 2022)	The household spends less than half on energy bills than the national median (hidden energy poverty)
LIHC	21% (HBS, 20202)	The household falls below the poverty line after paying the energy bills and spends more than the national median on the bills. („Low Income, High Cost”)
10%	37,3% (HBS, 2022)	The household spends more than 10% of their income on energy bills.

Indicator	Value (source, year)	Geographical Distribution
2M	21.7% (HBS, 2022)	50.7 % - urban area; 49.3 – rural areas
M/2	19.8% (HBS, 2022)	25.7% - urban areas, 74,3% - rural areas
LIHC	21% (HBS, 2022)	46.7% - urban areas, 53.3% - rural areas
10%	37,3% (HBS, 2022)	52.5% - urban areas, 47.5% - rural areas

Distribution of energy poverty indicators per income deciles

2M, M/2, LIHC and 10% - 2022





EU-SILC
Indicators

Year	Inability to keep home adequately warm (%)	Arrears on utility bills (%)	Population in dwelling with leaking roof, damp walls, etc. (%)
2020	10%	13.9%	10.9%
2021	10.1%	7.3%	9.4%
2022	15.2%	17.8%	10%

Local data for measuring and identifying energy poverty

- Local authorities are cornerstone in identifying and addressing the vulnerable households.
- Just Transition processes need to prioritize the vulnerable households
- OSS can play a positive role both in the process of identifying and developing customized solutions.
- Examples from the field.



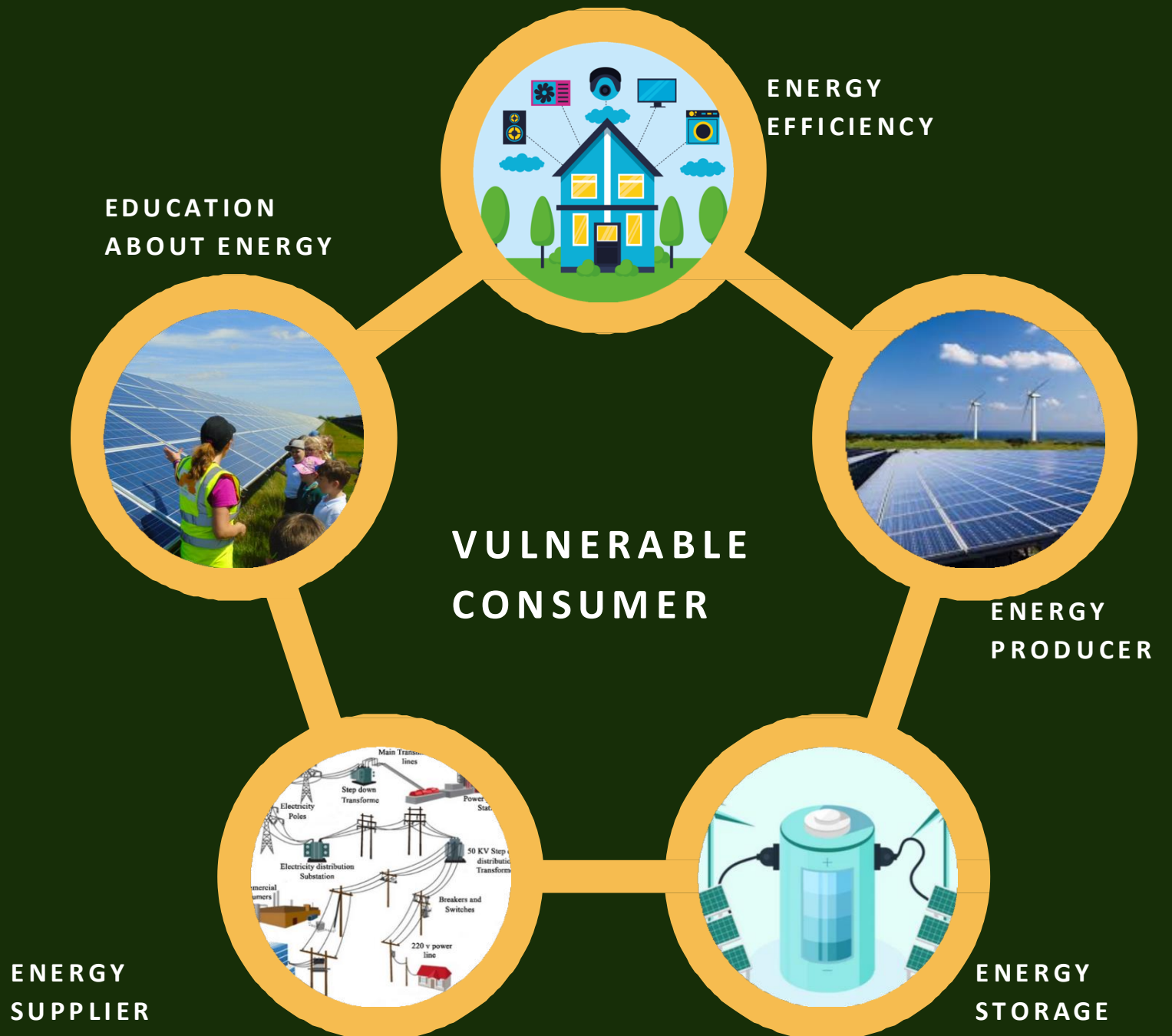
ENERGY COMMUNITY JIU VALLEY

A SMART AND WISE APPROACH TO ENERGY POVERTY



**Asociația pentru
Dezvoltare Teritorială
Integrată Valea Jiului**

ACTIONS TO BE DONE



ENERGY EFFICIENCY IN RESIDENTIAL AND PUBLIC BUILDINGS

- EIB - ELENA TECHNICAL ASSISTANCE - DOCUMENTAȚIE TEHNICĂ - 115 BUILDINGS
- JTF&RP WEST
- ONGOING TECHNICAL DOCUMENTATION - 30 BUILDINGS
- PRIORITIZE VULNERABLE CONSUMER CO-GENERATION CAPACITIES
- OWNER'S ASSOCIATIONS ARE MEMBERS OF THE ENERGY COMMUNITY



ENERGY PRODUCTION AND STORAGE

- TARGET TECHNICAL ASSISTANCE - PVP PLANTS FOR OWN CONSUMPTION
- & STORAGE
- 3 PREFEASIBILITY STUDIES
- “INSTITUTIONAL FRAMEWORK” OF THE ENERGY COMMUNITY
- TOR FOR PROCUREMENT



EDUCATION FOR CLEAN ENERGY

- LOSS LOCAL
- LOCAL COMMUNITY MEDIA
ADVERTISING AND PROMOTION OF
ENERGY EFFICIENCY, GREEN ENERGY
PRODUCING & STORAGE
- LOCAL CONTEST IN SCHOOLS FOR A
CLEAN AND ENERGY EFFICIENT JIU
VALLEY



COST BENEFIT ANALYSIS AT LOCAL LEVEL FOR INVESTING IN GREEN ENERGY AND USING STORAGE

Municipality	Investment	Budget advantages	Energy production MWh/yr	CO2 avoided till 2026
Petroșani	3,6 mil euro	364 k euro	6373	712k euro
Vulcan	2,1 mil euro	283k euro	2997	329k euro
Petrila	579 k euro	103k euro	1180	103k euro

NEXT STEPS



Asociația pentru
Dezvoltare Teritorial
Integrată Valea Jiulu

FEASIBILITY ON
PVP PLANTS AND
LOT 1 ENERGY
EFFICIENCY

CONTRACTING &
IMPLEMENTATION

MEMORANDUM
LOCAL MEMBERS

LAUNCH CALL FOR
ENERGY
COMMUNITIES

Panel discussion: Just Transition and Energy Poverty: marginalised communities, access barriers, and the role of international networks and energy-efficient initiatives

- ❖ **Anca Sinea**, Coordinator of the Romanian Energy Poverty Observatory (ORSE), Member alternate of the European Economic and Social Committee and a lead expert in energy poverty
- ❖ **Ana Maria Elian**, Managing Partner and Programme Director, MKBT (Romania)
- ❖ **Anna Bajomi**, Policy Officer, FEANTSA – European Federation of National Organisations Working with the Homeless (Europe)
- ❖ **Gall Podlaszewski**, Managing Director and Architect at PHLOX Architekt und Ingenieur GmbH (Germany)
- ❖ **Dr. Nadya Parpulova**, Department Economics of Transport and Energy, University of National and World Economy (Bulgaria)

slido

Please download and install the Slido app on all computers you use



Questionnaire: JT and energy poverty

① Start presenting to display the poll results on this slide.

Thank you!

🌐 www.bolster-horizon.eu



@bolster-horizon-europe



@bolster_eu



This project is funded by the European Union under the Grant Agreement n.º 101069586. Views and opinions expressed are however those of the author(s) only and do not necessarily reflect those of the European Union or CINEA. Neither the European Union nor the granting authority can be held responsible for them.

